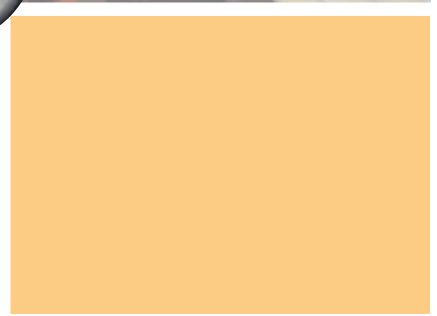
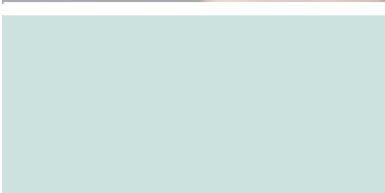
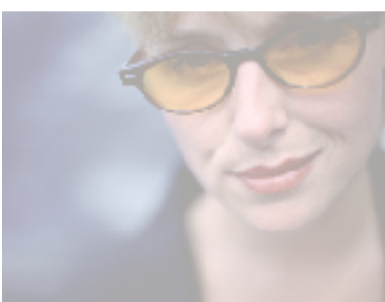




Your Gateway Remote Control

user'sguide



Setting up

Troubleshooting



Contents

Remote Control User's Guide	1
Remote control buttons	2
Inserting batteries	6
Programming the remote control	7
Component program codes	8
Searching for component codes	19
Reassigning component buttons	20
Changing volume lock	20
Teaching the remote control new functions	21
Using the remote control	22
Using picture-in-picture (PIP) mode	23
Using picture-on-picture (POP) mode	24
Setting up a favorite channel	25
Locking channels	25
Setting the sleep timer	26
Using the Parental Guide	27
Setting a password	29
Troubleshooting	31

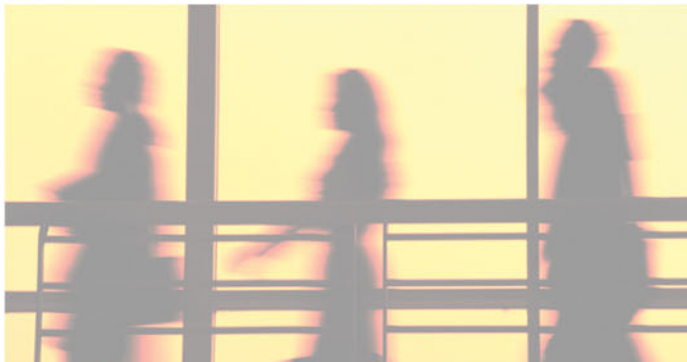


Remote Control User's Guide

1

Read this guide to learn how to:

- Identify the remote control buttons
- Insert the batteries
- Program the remote control
- Use the remote control
- Troubleshoot typical problems



Remote control buttons

Button

Function



SETUP. Starts all programming sequences.

Remote LED. Blinks when the remote is being programmed or is sending a signal to your plasma TV.

POWER. Turns your plasma TV or other selected component on and off.



Programs the remote control to recognize a component. For programming instructions, see "Programming the remote control" on page 7.

CBL. Selects a programmed cable TV set-top box.

DVD. Selects a programmed DVD player.

VCR. Selects a programmed VCR.



TV. Selects a programmed TV.

SAT. Selects a programmed satellite TV set-top box.

CD. Selects a programmed CD player.

AMP. Selects a programmed amplifier.

TNR. Selects a programmed amplifier radio tuner.

Button	Function
	<p>Number button pad. Selects a channel or password.</p> <p>MUTE. Turns the sound on and off.</p> <p>100. Enters channel numbers greater than 100.</p>
	<p>VOL. Turns volume up or down.</p> <p>LAST. Recalls the previously viewed channel.</p> <p>FAV. CH. Tunes to the channels in your favorite channel list.</p> <p>INPUT SELECT. Changes the video input source.</p> <p>CH. Changes the channel.</p>

Button

Function



FAV. SET. Adds and deletes channels from your favorite list.

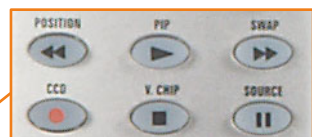
WIDE. Cycles through standard and widescreen viewing modes.

△, ▽, ◀, ▶. Navigates the on-screen display (OSD) menus.

SET. Works as the Enter button.

DISPLAY. Shows the current status of your plasma TV, such as the video input source, PIP/POP information, audio status, and channel number.

MENU. Enters the OSD menus.



POSITION/Reverse. Moves the PIP window.

Rewinds the CD, DVD, or VCR when the component is activated with the remote control.

PIP/Play. Turns PIP (picture-in-picture) mode and POP (picture-on-picture) mode on and off.

Plays the CD, DVD, or VCR when the component is activated with the remote control.

SWAP/Forward. Swaps the main picture and the sub-picture under PIP and POP modes.

Forwards the CD, DVD, or VCR when the component is activated with the remote control.

CCD/Record. Turns Closed Caption mode on and off.

Records the CD, DVD, or VCR when the component is activated with the remote control.

V. CHIP/Stop. Accesses the Parental Guide settings in the on-screen display (OSD).

Stops the CD, DVD, or VCR when the component is activated with the remote control.

SOURCE/Pause. Changes the video input source for the PIP or POP sub-picture.

Pauses the CD, DVD, or VCR when the component is activated with the remote control.

Button
Function



MTS. Turns MTS stereo on and off.

CH. LOCK. Opens the Channel Lock password screen to lock the currently selected channel.

SLEEP TIMER. Turns on sleep timer settings.

RESET. Restores default picture settings.

TV. Selects TV as the video input source.

AV1. Selects the component connected to AV1 as the input source.

AV2. Selects the component connected to AV2 as the input source.

AV3. Unprogrammed button. To program this button, see "Reassigning component buttons" on page 20.

COMPONENT 1. Selects the component connected to Component 1 as the video input source.

COMPONENT 2. Selects the component connected to Component 2 as the video input source.

RGB. Selects the component connected to the RGB connector as the video input source.

DVI. Selects the component connected to the DVI connector as the video input source.

Inserting batteries



To install batteries:

- Insert two AA batteries into the remote control. Make sure that you match the + and – on the batteries with the + and – symbols inside the battery compartment.



Programming the remote control

The TV component button has been preset to work with your Gateway plasma TV (program code 0072). You can program the remote control to work with as many as seven other components.



To program the remote to control other components:

- 1 Turn on the component.
- 2 Press the matching component button on the remote control.
- 3 Press and hold **SETUP** until the LED flashes twice.
- 4 Enter the programming code for the component and manufacturer. For a list of component programming codes, see “Component program codes” on page 8. If the code is accepted, the LED flashes twice after the last digit is entered.

If the LED does not flash twice, repeat Steps 2 through 4 with the next code listed for the component and manufacturer.

Important



If there is more than one code listed for the component and manufacturer, make sure that you try all the codes listed to find the one that works for the component.

- 5 Point the remote control at the component and press **POWER**. The component should turn off.



Tips & Tricks



If you cannot find your manufacturer in the component list or the program code does not work, you can use the remote control to search for the correct component code. See “Searching for component codes” on page 19.

Component program codes

Use the codes in the following tables to program the remote control to work with your existing audio and video components.

Amplifier and tuner codes

Manufacturer	Program Code	Manufacturer	Program Code
GE	0078	Realistic	0395
Harman/Kardon	0892	Sony	0689
JVC	0331	Soundesign	0078
Marantz	0892	Victor	0331
Optimus	0395	Wards	0078
Philips	0892	Yamaha	0354
Polk Audio	0892		

Cable set-top box codes

Manufacturer	Program Code(s)	Manufacturer	Program Code(s)
ABC	0003, 0017	Philips	0305, 0317
Americast	0899	Pioneer	0144, 0533, 0877
Bell South	0899	Pulsar	0000
General Instrument	0276, 0476, 0810	Quasar	0000
Goldstar	0144	Regal	0273, 0279
Hamlin	0009, 0273	Runco	0000
Jerrold	0003, 0276, 0476, 0810	Samsung	0144
Memorex	0000	Scientific Atlanta	0017, 0477, 0877
Motorola	1106	Starcom	0003
Pace	0237	Toshiba	0000
Panasonic	0107, 0000	Zenith	0000, 0525, 0899
Paragon	0000		

CD player codes

Manufacturer	Program Code(s)	Manufacturer	Program Code(s)
Aiwa	0157	Parasound	0420
Burmester	0420	Philips	0157, 0626
California Audio Labs	0029	Pioneer	0032, 0468, 0305, 1062, 1063
Carver	0157, 0179	Polk Audio	0157
DKK	0000	Proton	0157
Denon	0003, 0873	QED	0157
Emerson	0305	Quasar	0029
Fisher	0179	RCA	0053, 0032, 1062, 0468, 0305, 0179
Garrard	0420	Realistic	0179, 0420
Genexxa	0032, 0305	Rotel	0157, 0420
Harman/Kardon	0157, 0173	SAE	0157
Hitachi	0032	Sansui	0157, 0305
JVC	0072	Sanyo	0179
Kenwood	0028, 0190, 0826, 0037, 0626, 0681	Scott	0305
Krell	0157	Sears	0305
LXI	0305	Sharp	0037, 0861
Linn	0157	Sherwood	1067
MCS	0029	Sonic Frontiers	0157
MTC	0420	Sony	0000, 0490
Magnavox	0157, 0305	Soundesign	0145
Marantz	0157, 0626, 0029	Tascam	0420
Mission	0157	Teac	0420
NSM	0157	Technics	0029

Manufacturer	Program Code(s)	Manufacturer	Program Code(s)
Onkyo	0101, 0868	Victor	0072
Optimus	0032, 0468, 0420, 0179, 0305, 1063, 0000, 0037, 0145	Wards	0053, 0157
Panasonic	0029	Yamaha	0036, 0888

DVD player codes

Manufacturer	Program Code(s)	Manufacturer	Program Code(s)
Apex	0672	Oritron	0651
Denon	0490	Panasonic	0490, 0677, 0632
Fisher	0670	Philips	0539, 0503
GE	0522	Pioneer	0571, 0525, 0632
Gradiente	0651	Proscan	0522
Hitachi	0573, 0664	RCA	0522, 0571
Hiteker	0672	Samsung	0573
JVC	0623, 0558	Sharp	0630
Kenwood	0682, 0534	Sony	0533
Konka	0719, 0711, 0720, 0721	Technics	0490
Magnavox	0503, 0675	Theta Digital	0571
Marantz	0539	Toshiba	0503
Mitsubishi	0521	Yamaha	0490, 0545
Onkyo	0503	Zenith	0591, 0503
Optimus	0571		

Home automation codes

Manufacturer	Program Code	Manufacturer	Program Code
GE	0240	Security System	0167
One For All	0167	Universal X10	0167
Radio Shack	0240	X10	0167

Receiver codes

Manufacturer	Program Code(s)	Manufacturer	Program Code(s)
ADC	0531	Philips	1089, 1189, 1269
Aiwa	0121, 1405, 1089	Pioneer	0150, 0531, 0630, 1023
Capetronic	0531	Proscan	1254
Carver	1089, 1189	Quasar	0039
Denon	1160, 1104	RCA	1254, 0531, 1023
Harman/Kardon	0110	Sansui	1089
JBL	0110	Sharp	0186
JVC	0074	Sony	1158, 1058, 1258
Kenwood	1027, 0186, 1313, 1569, 1570	Soundesign	0670
MCS	0039	Sunfire	1313
Magnavox	1089, 0531, 1189	Technics	0039, 1308, 1518, 1309
Marantz	1189, 1089, 0039	Thorens	1189
Onkyo	0135	Victor	0074
Optimus	1023, 0186, 0531, 0670	Yamaha	0176, 0186, 1176
Panasonic	0039, 1518		

Satellite set-top box codes

Manufacturer	Program Code(s)	Manufacturer	Program Code(s)
AlphaStar	0772	Next Level	0869
Chaparral	0216	Panasonic	0247, 0701
Echostar	0775, 1005	Philips	1076, 1142, 0722, 0724, 0749
Expressvu	0775	Proscan	0392
GE	0566	RCA	0566, 0392, 0143, 0855
General Instrument	0869	Radio Shack	0869
HTS	0775	Samsung	1109
Hitachi	0819	Sony	0639
Hughes Network Systems	0749, 1142, 1749	Star Choice	0869
JVC	0775	Toshiba	0749, 0790
Magnavox	0722, 0724	Uniden	0724, 0722
Memorex	0724	Zenith	0856
Mitsubishi	0749		

TV codes

Manufacturer	Program Code(s)	Manufacturer	Program Code(s)
AOC	0019, 0030	Memorex	0179, 0463, 0178, 0016, 0056, 0150, 0154, 0250
Admiral	0093, 0463	Midland	0017, 0047, 0051
Aiko	0092	Mitsubishi	0150, 0178, 0019, 0093
Aiwa	0701	Motorola	0093
Akai	0030	Multitech	0180
Alaron	0179	NAD	0156, 0166, 0178
America Action	0180	NEC	0030, 0019, 0056
Anam	0180	NTC	0092

Manufacturer	Program Code(s)	Manufacturer	Program Code(s)
Audiovox	0092, 0180, 0451, 0623	Nikko	0178, 0030, 0092
Baysonic	0180	Onwa	0180
Belcor	0019	Optimus	0250, 0166, 0154
Bell & Howell	0016, 0154	Optonica	0093
Bradford	0180	Orion	0463, 0179, 0236
Brockwood	0019	Panasonic	0051, 0250
Broksonic	0236, 0463	Penney	0047, 1347, 0060, 0030, 0178, 0051, 0019, 0056, 0156
CXC	0180	Philco	0145, 0019, 0030, 0054, 0463
Candle	0030, 0056	Philips	0054
Carnivale	0030	Pilot	0019, 0030
Carver	0054	Pioneer	0166, 0679
Celebrity	0000	Portland	0019, 0092
Cineral	0451, 0092	Princeton	0717
Citizen	0056, 0030, 0060, 0092	Prism	0051
Concerto	0056	Proscan	0047
Contec	0180	Proton	0178
Craig	0180	Pulsar	0017, 0019
Crosley	0054	Quasar	0051, 0250
Crown	0180	RCA	0047, 1347, 1147, 0679, 1247, 0019, 0051, 0090, 0093, 1047, 1447
Curtis Mathes	0060, 0030, 0016, 0047, 0051, 0054, 0056, 0093, 0145, 0154, 0166, 0451, 1147, 1347	Radio Shack	0180, 0030, 0178, 0154, 0019, 0047, 0056
Daewoo	0092, 0623, 0019, 0624, 0451	Realistic	0180, 0154, 0030, 0178, 0019, 0056

Manufacturer	Program Code(s)	Manufacturer	Program Code(s)
Daytron	0019	Runco	0017, 0030
Denon	0145	SSS	0019, 0180
Dumont	0017, 0019	Sampo	0030
Electroband	0000	Samsung	0060, 0019, 0178, 0030, 0056
Emerson	0236, 0180, 0178, 0179, 0463, 0624, 0623, 0019, 0154	Sansei	0451
Envision	0030	Sansui	0463
Fisher	0154	Sanyo	0154
Fujitsu	0179, 0683	Scimitsu	0019
Funai	0180, 0171, 0179	Scotch	0178
Futuretech	0180	Scott	0236, 0019, 0178, 0179, 0180
GE	0047, 1347, 0051, 0178, 0451, 1147, 0093	Sears	0154, 0056, 0156, 0047, 0054, 0171, 0178, 0179
Gibraltar	0017, 0019, 0030	Semivox	0180
GoldStar	0178, 0019, 0030, 0056	Semp	0156
Gradiente	0056, 0053	Sharp	0093, 0688
Grunpy	0179, 0180	Shogun	0019
Hallmark	0178	Signature	0016
Harley Davidson	0179	Sony	0000
Harman/Kardon	0054	Soundesign	0178, 0179, 0180
Harvard	0180	Squareview	0171
Hitachi	0145, 0056, 0016	Starlite	0180
Infinity	0054	Supreme	0000
Inteq	0017	Sylvania	0054, 0030
JBL	0054	Symphonic	0171, 0180

Manufacturer	Program Code(s)	Manufacturer	Program Code(s)
JCB	0000	TMK	0056, 0178
JVC	0053	TNCi	0017
KEC	0180	Tandy	0093
KTV	0180, 0030	Technics	0051, 0250
Kenwood	0030, 0019	Technol Ace	0179
Konka	0707, 0632, 0628, 0638, 0703	Techwood	0051, 0056
LG	0056	Teknika	0016, 0054, 0179, 0180, 0019, 0092, 0056, 0060, 0150
LXI	0154, 0047, 0054, 0156, 0178	Telefunken	0056
Logik	0016	Toshiba	0156, 0060, 0154, 1256
Luxman	0056	Vector Research	0030
MGA	0150, 0019, 0030, 0178	Victor	0053
MTC	0060, 0030, 0019, 0056	Vidikron	0054
Magnavox	0054, 0030, 0179, 1254	Vidtech	0019, 0178
Majestic	0016	Wards	0054, 0178, 0016, 0019, 0030, 0056, 0179
Marantz	0054, 0030	White Westinghouse	0624, 0623, 0463
Matsushita	0250	Yamaha	0019, 0030
Megatron	0145, 0178	Zenith	0017, 0624, 0016, 0092, 0463

VCR codes

Manufacturer	Program Code(s)	Manufacturer	Program Code(s)
Admiral	0048, 0209	Mitsubishi	0043, 0048, 0067
Adventura	0000	Motorola	0035, 0048
Aiko	0278	Multitech	0000, 0072
Aiwa	0000, 0037	NEC	0038, 0067, 0104
America Action	0278	Nikko	0037
American High	0035	Noblex	0240
Asha	0240	Olympus	0035
Audiovox	0037	Optimus	0162, 1062, 1162, 0048, 1262, 0037, 1048, 0104, 0432
Beaumark	0240	Orion	0479, 0002, 0184, 0209
Bell & Howell	0104	Panasonic	0035, 0162, 1162, 1262, 1362, 0616, 1062
Broksonic	0121, 0184, 0002, 0209, 0479	Penney	0035, 0240, 0037, 0042, 0038
CCE	0072, 0278	Pentax	0042
Calix	0037	Philco	0035, 0209, 0479
Canon	0035	Philips	0081, 0035, 0618, 1081, 1181
Carver	0081	Pilot	0037
Cineral	0278	Pioneer	0067
Citizen	0278, 0037	Polk Audio	0081
Colt	0072	Profitronic	0240
Craig	0037, 0072, 0047, 0240	Proscan	0060
Curtis Mathes	0035, 0060, 0162	Protec	0072
Cybernex	0240	Pulsar	0039
Daewoo	0278, 0045	Quasar	0035, 0162, 1162

Manufacturer	Program Code(s)	Manufacturer	Program Code(s)
Denon	0042	RCA	0060, 0149, 0042, 0035, 0048, 0240
Dynatech	0000	Radio Shack	0000, 1037
Electrohome	0037	Radix	0037
Electrophonic	0037	Randex	0037
Emerex	0032	Realistic	0000, 0104, 0047, 0048, 0037, 0035
Emerson	0184, 0002, 0209, 0278, 0121, 0479, 0000, 0037, 0043	ReplayTV	0614, 0616
Fisher	0047, 0104	Runco	0039
Fuji	0033, 0035	STS	0042
Funai	0000	Samsung	0045, 0240
GE	0035, 0060, 0048, 0240	Sanky	0039, 0048
Garrard	0000	Sansui	0479, 0000, 0067, 0209
Go Video	0432	Sanyo	0047, 0104, 0240
GoldStar	0037, 0038	Scott	0184, 0121, 0043, 0045
Gradiente	0000	Sears	0037, 0042, 0000, 0035, 0047, 0104
HI-Q	0047	Semp	0045
Harley Davidson	0000	Sharp	0048
Harman/Kardon	0038, 0081	Shintom	0072
Harwood	0072	Shogun	0240
Hitachi	0042, 0000	Singer	0072
Hughes Network Systems	0042	Sony	0033, 0032, 0000, 0035, 0636, 1032
JVC	0067	Sylvania	0035, 0081, 0000, 0043
KEC	0037, 0278	Symphonic	0000

Manufacturer	Program Code(s)	Manufacturer	Program Code(s)
KLH	0072	TMK	0240
Kenwood	0067, 0038	Teac	0000
Kodak	0035, 0037	Technics	0035, 0162
LXI	0037	Teknika	0000, 0035, 0037
Lloyd's	0000	Thomas	0000
Logik	0072	Tivo	0618, 0636
MEI	0035	Toshiba	0045, 0043
MGA	0043, 0240	Totevision	0037, 0240
MGN Technology	0240	Unitech	0240
MTC	0000, 0240	Vector	0045
Magnasonic	0278	Vector Research	0038
Magnavox	0035, 0081, 0563, 0000, 0039, 0149	Video Concepts	0045
Magnin	0240	Videosonic	0240
Marantz	0081, 0035	Wards	0035, 0060, 0000, 0047, 0240, 0042, 0048, 0072, 0081, 0149
Marta	0037	White Westinghouse	0072, 0278, 0209
Matsushita	0035, 0162	XR-1000	0072, 0000, 0035
Memorex	0104, 0047, 0479, 0000, 0037, 0048, 0035, 0240, 1037, 0039, 0162, 0209, 1162, 1262	Yamaha	0038
Minolta	0042	Zenith	0039, 0000, 0033, 0209, 0479

Searching for component codes

If you cannot find your manufacturer in the component list or the program code does not work, you can use the remote control to search for the correct component code.



To search for a component code:

- 1 Turn on the component.
- 2 Press the matching component button on the remote control.
- 3 Press and hold **SETUP** until the LED flashes twice.
- 4 Press **9 9 1**. The LED flashes twice.
- 5 Point the remote control at the component and alternate between pressing **POWER** and the component button on the remote control until the component turns off.



If the component still does not respond, clear the component button, then repeat the search procedure.



To clear the component button:

- 1 Make sure that the component is turned on.
- 2 Press and hold the **SETUP** button on the remote control until the LED flashes twice.
- 3 Press **9 9 2**, then press the component button on the remote control twice.



Reassigning component buttons

You can reassign the component buttons on the remote control if you have more than one of the same type of component.

Example:

If you are using the remote to control the cable (CBL), CD, DVD, TV, and two VCRs, you can reassign the satellite (SAT) button as a second VCR button.



To reassign component buttons:

- 1 Press and hold **SETUP** until the LED flashes twice.
- 2 Press **9 9 2**. The LED flashes twice.
- 3 Press the component button that you want (**VCR**) once, then press the component button that you are reassigning (**SAT**) once. The SAT button is now reassigned and can be programmed as a VCR component button. See "Programming the remote control" on page 7.



Changing volume lock

The remote control is set to control volume through your TV while in cable (CBL), DVD, satellite (SAT), and VCR component modes. Use the volume lock if you want to control the volume for all components through a specific component.

Example:

You want to control volume for all components through the tuner.



To reassign component buttons:

- 1 Press and hold **SETUP** until the LED flashes twice.
- 2 Press **9 9 3**. The LED flashes twice.
- 3 Press the component button that you want (**TNR**) once. The LED flashes twice. Volume will now be controlled through the tuner for all components.



Teaching the remote control new functions

The remote control can learn up to 25 additional functions from the component's original remote control.

Example:

Your DVD player remote control has a scan function that you use frequently. There is not a scan button on the remote control. You can assign a button and use the DVD remote to teach the remote control the scan function.

Important



Make sure that you have already programmed the remote control for the component. See "Programming the remote control" on page 7.

Make sure the area lighting is not too bright or it will interfere with the learning process.



To teach the remote control a new function:

- 1** Press and hold **SETUP** on the remote control until the LED flashes twice.
- 2** Press **9 7 5**. The LED flashes twice.
- 3** Press the component button that you want (**DVD**) once.
- 4** Press the button that you are assigning the new function to. The LED flashes quickly while it is waiting to receive the signal from the teaching remote.
- 5** Hold the teaching remote control approximately 1-inch (2.54 cm) from the remote control making sure that the infrared ports are lined up, then press the button on the teaching remote that you want the remote to learn. The LED flashes twice.
- 6** Press **SETUP** to exit learning mode.



Using the remote control

Your plasma TV features an on-screen display (OSD) that lets you adjust and save contrast, brightness, and other settings. The TV saves changes you make to the settings, even if you turn off the TV. See the documentation that came with your plasma TV for more information about the OSD.



To access the OSD with the remote control:

- 1** Press the **TV** component button.
- 2** Press the **MENU** button on the remote control to open the OSD.
- 3** Press the ◀ and ▶ buttons to select the OSD menu.
- 4** Press the ▲ and ▼ buttons to select the option you want to change.
- 5** Press the ◀ and ▶ buttons to change settings.



Using picture-in-picture (PIP) mode

When the picture-in-picture (PIP) mode is active, one picture is displayed on the full screen (main picture) and the other picture is displayed in a small window (sub-picture). The OSD in the upper-right corner of your screen lists the programs displayed on the full screen and in the window.

Warning



Avoid leaving the PIP window in the same position for an extended period of time because this may cause image burn-in. For more information on image burn-in, see the documentation that came with your plasma TV.

Your warranty does **NOT** cover image burn-in.

Tips & Tricks



You can use PIP mode if your video input source is set to TV, AV, or S-Video. You can also use PIP mode if your video input source is set to Component 1 or Component 2, but only if the video input source is 480i or lower, such as a non-progressive DVD player.

Component video input sources higher than 480i, such as a HDTV set-top box or progressive DVD player, do not work in PIP mode. If your video input source is set to RGB or DVI, PIP mode does not work.



To control PIP mode using the remote control:

- 1 Press the **TV** component button.
- 2 Press the **PIP** button on the remote control once to turn on PIP mode. A small window appears in one corner of the screen. The picture on the full screen is the main picture. The picture in the window is the sub-picture.
- 3 Press the **POSITION** button one or more times to move the window to a different corner of the screen.
- 4 Press the **SWAP** button to swap the main picture and the sub-picture.
- 5 Press any one of the direct input buttons (TV, AV1, AV2, etc.) on the remote control to change the video input source for the main picture.
- 6 Press the **SOURCE** button on the remote control one or more times to change the video input source for the sub-picture.



Using picture-on-picture (POP) mode

When the picture-on-picture (POP) mode is active, the screen is divided into two equal parts with a picture displayed on each side. The OSD in the upper-right corner of your screen lists the video input source displayed on each side of the screen.

Tips & Tricks



You can use POP mode if your video input source is set to TV, AV, or S-Video. You can also use POP mode if your video input source is set to Component 1 or Component 2, but only if the video input source is 480i or lower, such as a non-progressive DVD player.

Component video input sources higher than 480i, such as a HDTV set-top box or progressive DVD player, do not work in POP mode. If your video input source is set to RGB or DVI, POP mode does not work.



To control POP mode with the remote control:

- 1 Press the **TV** component button.
- 2 Press the **PIP** button on the remote control twice to turn on POP mode. The screen is split into two pictures. The picture on the left side of your screen is the main picture. The picture on the right side of the screen is the sub-picture.
- 3 Press the **SWAP** button to swap the pictures.
- 4 Press any one of the direct input buttons (TV, AV1, AV2, etc.) on the remote control to change the video input source for the main picture.
- 5 Press the **SOURCE** button on the remote control one or more times to change the video input source for the sub-picture.



Setting up a favorite channel

You can change the favorite channel settings using the remote control or the OSD.

To set up a favorite channel using the remote control:

- 1 Press the **TV** component button.
- 2 Press the CH up or down buttons on the remote control to scroll to the channel you want to set as a favorite channel.
- 3 Press the **FAV. SET** button on the remote control.
- 4 To watch your favorite channel, press the **FAV. CH** button on the remote control.
- 5 If you want to remove a favorite channel, tune to the channel, then press the **FAV. SET** button again. The OSD resets the channel status to NORMAL.



Locking channels

If you do not want a channel to be accessible, you can set the channel lock for that channel. When you select a locked channel, you are prompted to enter your password.

To lock a channel using the remote control:

- 1 Press the **TV** component button.
- 2 Press the CH up or down button to select the channel you want to lock.
- 3 Press the **CH. LOCK** button on the remote control.
- 4 Enter your password when prompted. If you have not set a password, use the number button pad to enter **0000**. For more information about setting a password, see “Setting a password” on page 29. The channel is locked, and you cannot view the channel unless you enter the password.
- 5 Press the **CH. LOCK** button again, then enter the password to unlock the channel.



Setting the sleep timer

The sleep timer lets you set a time when you want your plasma TV to turn off automatically. One minute before the timer turns off your plasma TV, the timer appears and shows the seconds remaining before your plasma TV turns off.

You can set the sleep timer using the remote control or the OSD.



To set the sleep timer using the remote control:

- 1** Press the **TV** component button.
- 2** Press the **SLEEP TIMER** button on the remote control. The sleep timer appears in the upper-right corner of your screen.
- 3** Press the **SLEEP TIMER** button one or more times to cycle through all the preset times from 20 minutes to 120 minutes in 20 minute increments.
- 4** Press the **DISPLAY** button to hide the sleep timer display. Your sleep timer is now running in the background.



To turn off the sleep timer using the remote control:

- Press the **SLEEP TIMER** button repeatedly until SLEEP: OFF appears.



Using the Parental Guide

The V-Chip (Parental Guide) feature prevents viewers from watching programs that are not age-appropriate, such as programs containing violence or adult language.



To set the Parental Guide:

- 1 Press the **TV** component button.
- 2 Press the **V. CHIP** button on remote control to access the Parental Guide setting.
- 3 Enter your password when prompted. If you have not set a password, use the number button pad to enter **0000**. For more information about setting a password, see “Setting a password” on page 29.
- 4 Press the **<** and **>** buttons on the remote control to select **ON**.
- 5 Press the **SET** button on the remote control to go to the next menu.

Parental Guidelines						
Rating	All	FV	V	S	L	D
TV-Y	U					
TV-Y7	U	U				
TV-G	U					
TV-PG	U		U	U	U	U
TV-14	U		U	U	U	U
TV-MA	U		U	U	U	

U: Unblocked
B: Blocked

↑↓←→: Selection
SET: Set

6 Press the \triangle ∇ \triangleleft \triangleright buttons to select which rating you want to block or unblock. You can select from the following ratings:

- FV (fantasy violence)
- V (violence)
- S (sexual situations)
- L (adult language)
- D (sexual dialog)
- TV-Y (all children)
- TV-Y7 (older children)
- TV-G (general audience)
- TV-PG (guidance suggested)
- TV-14 (strongly cautioned)
- TV-MA (mature audience)

7 Press the **SET** button to select U (unblocked) or B (blocked).

8 Press the \triangleleft and \triangleright buttons to select **NEXT PAGE**, then press the **SET** button to go to the next menu. On this menu you can select the following MPAA movie ratings:

- G (general audience)
- PG (parental guidance suggested)
- PG-13 (recommended for children 13 years of age and older)
- R (mature audience)
- NC-17 (no one under 17 years of age)
- X (no one under 17 years of age)

9 Press the \triangle ∇ \triangleleft \triangleright buttons to select which MPAA rating you want to block or unblock.

10 Press the **SET** button to select U (unblocked) or B (blocked).

11 Press the \triangleleft and \triangleright buttons to select **FINISH**. The message "Parental Guide ACCOMPLISHED" appears.



Setting a password

You control access to the V-Chip (Parental Guide) and channel lock features with a password. The default password is 0000. You can change the password to any four-digit number.



To change the security password:

- 1 Press the **TV** component button.
- 2 Press the **MENU** button on the remote control to open the OSD.
- 3 Press the ◀ and ▶ buttons to select the TV menu.

PICTURE	SOUND	PIP/POP	TV	OTHER
CHANNEL				12
CHANNEL STATUS				NORMAL
MTS				STEREO
CCD				OFF
V-CHIP				OFF
SET PARENTAL CODE				DISABLE
SET RATE				DISABLE
CH SEARCH				DISABLE
TUNER SOURCE				CABLE
BACKGROUND				ON
BACKGROUND COLOR				BLUE
↑↓ SELECT ITEM ← → ADJUST VALUE				

- 4 Press the ▲ and ▼ buttons to select the **SET PARENTAL CODE** option.
- 5 Press the ◀ and ▶ buttons to select **ENABLE**. The *PASSWORD SETTING* box opens.

PASSWORD SETTING

PRESS OLD PASSWORD

?
?
?
?

- 6 If you are setting the password for the first time, use the number button pad to enter the default password (0000). Each time you enter a number, the ? (question mark) changes to a + (plus sign).

- OR -

If you have previously set a password, use the number button pad to enter your old password. Each time you enter a number, the (question mark) changes to a + (plus sign).

- 7 Use the number button pad to enter a new four-digit password.
- 8 Enter the new password again when prompted.

Tips & Tricks



If you enter the old password incorrectly three times, your plasma TV displays the TV menu in the OSD.

If you enter the new password incorrectly three times, your plasma TV displays the NEW PASSWORD box again. You will have to set up your new password again.



Resetting your customized password

If you lose or forget your customized password, use this procedure to reset your password to the factory default setting (0000).



To reset your customized password:

- 1 Press the **TV** component button.
- 2 Press and hold the ◀ button on your remote control for seven seconds.
- 3 Press and hold the ▶ button on your remote control for seven seconds.
- 4 Press the **LAST** button on your remote control. Your password is now reset to the factory default (0000).



Troubleshooting

Use the following information to solve common problems.

The LED doesn't blink when a button is pressed.

- Replace the batteries. See "Inserting batteries" on page 6.

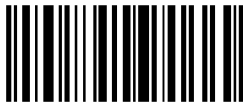
The LED blinks when a component mode is pressed, but the component does not respond.

- Make sure that you are less than 15 feet (4.57 meters) from the infrared remote sensors on the component.
- Make sure that nothing is blocking the infrared remote sensors on the remote control or the component.
- Make sure that the remote was programmed for that component. See "Programming the remote control" on page 7.

The remote control will not accept the component program code.

- Make sure that you followed all the steps in the programming procedure. See "Programming the remote control" on page 7.
- Make sure that you tried all the program codes listed for the component manufacturer. See "Component program codes" on page 8.
- Perform the component code search procedure. See "Searching for component codes" on page 19.

MAN DTV C48S REMOTE USER GDE R0 4/03



8509153